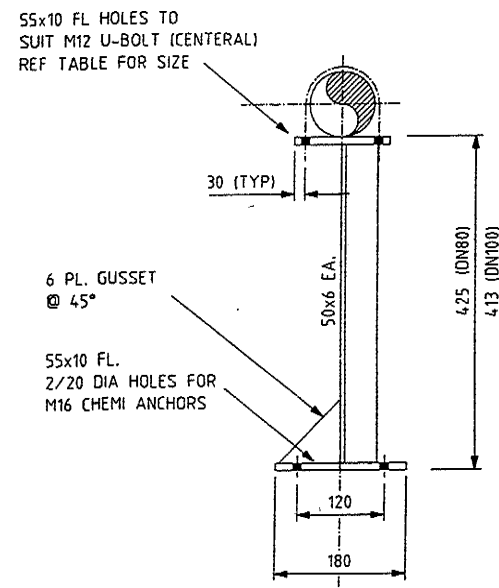
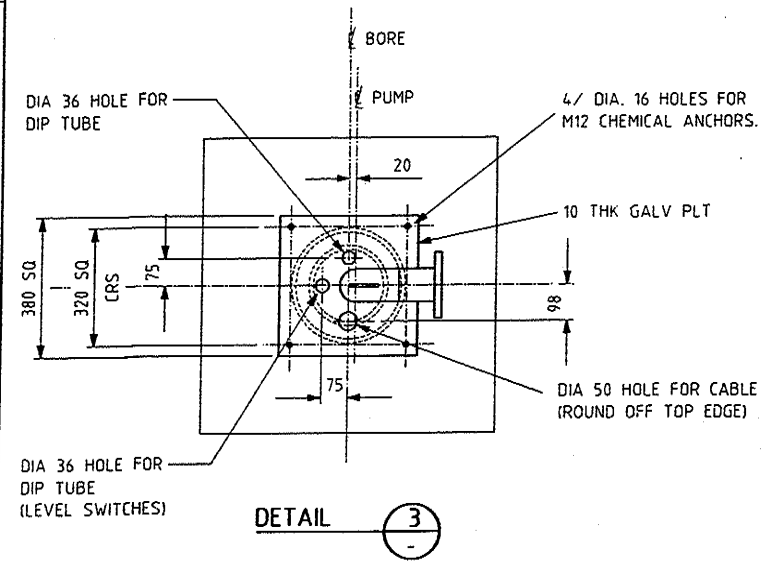


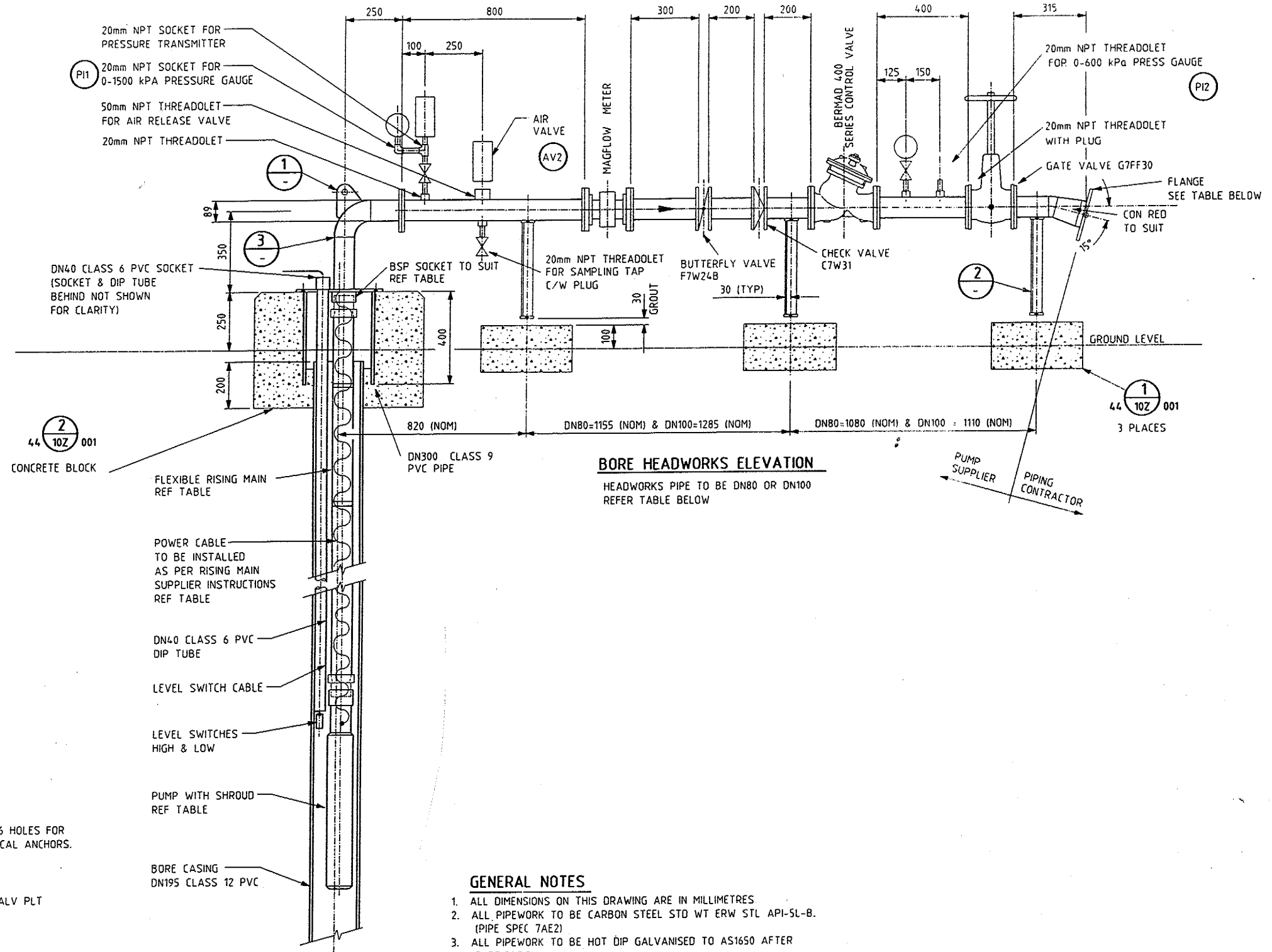
DETAIL 1
1:5



DETAIL 2
1:5



DETAIL 3
1:5



BORE HEADWORKS ELEVATION
HEADWORKS PIPE TO BE DN80 OR DN100
REFER TABLE BELOW

GENERAL NOTES

1. ALL DIMENSIONS ON THIS DRAWING ARE IN MILLIMETRES
2. ALL PIPEWORK TO BE CARBON STEEL STD WT ERW STL API-5L-B. (PIPE SPEC 7AE2)
3. ALL PIPEWORK TO BE HOT DIP GALVANISED TO AS1650 AFTER FABRICATION.
4. ALL THREADOLET CONNECTIONS TO BE SET ON PIPE AND WELDED OVER DRILLED HOLE.
5. GASKETS TO BE NON-ASBESTOS RING PT AGT 1.5 mm.
7. PIPE SUPPORTS TO BE HOT DIPPED GALVANISED TO AS1650 AFTER FABRICATION.